



Radiography Program

Minimum requirements checklist

(Effective with the new selective admissions application)

Please complete the following items as soon as possible and refer to the Radiography Web site for program information.

Program begins in January.

- Completion of St. Petersburg College Admission Application and the non-refundable fee.
- Submission of official, unopened (sealed) high school transcript(s) or GED transcript. Unofficial copies or official copies that have been opened are not acceptable. Applicants who have earned an Associate in Arts, Associate in Science, Associate in Applied Science, baccalaureate, or higher degree from an accredited institution are waived from this requirement.
- Submission of all official, unopened (sealed) college transcripts from previously or currently enrolled colleges. Unofficial copies or official copies that have been opened are not acceptable.
- Completion of placement testing and all college preparatory work. Applicants who have credits earned in mathematics, composition, and/or reading may be waived from the placement test.
- If previously or currently enrolled at SPC, academically in good standing and have a cumulative 2.0 GPA.
- A minimum 2.75 GPA on a 4.00 scale in all courses completed that are included in the general education and support courses of the Radiography curriculum.
- Completion of BSC 2085 and BSC 2085L, Human Anatomy and Physiology I and Lab, and MAC 1105, College Algebra with grades of "C" or better.
- Completion of a minimum of eight hours of observation, volunteer service or work experience in a radiology department or imaging center verified by a radiologist or radiographer.
- At least 18 years of age.
- Submission of the Selective Health Programs Application with the completed Health Program Experience / Observation Record by the July 1st application deadline.

Within 90 days of the start of the first specialty course:

- Successful passing of a background check and drug screening.
- Completion of the Health Examination Form and any required immunizations.
- Completion of the Student Services Orientation.

RTR

Radiography

Selective admissions

Registered Technologist, Radiography

Career opportunities:

- Cardiac catheterization
- Computed tomography (CT)
- Hospital and outpatient centers/general radiography
- Magnetic resonance imaging (MRI)
- Mammography
- Management
- Nuclear medicine
- Portable imaging services
- Radiation therapy
- Special procedures (Angiography)

Radiography is the art and science of applying ionizing radiation to human beings to diagnose disease.

Radiographers are health care professionals trained to use radiation to produce images of various structures of the human anatomy. These images or radiographs are used to visualize bones and organs in the body for diagnosis by radiologists and medical doctors who specialize in interpreting radiographs.

Radiography technologists must balance superior technical knowledge and skill with a strong desire to care for people. Successful radiographers must be alert, accurate, congenial, flexible and willing to work with the ill and the disabled.

Graduates receive certificates of completion and Associate in Science degrees in Radiography. Upon program completion, graduates apply to take the entry-level certification examination offered by the American Registry of Radiologic Technologists (ARRT). Following successful completion of the program curriculum and the ARRT registry examination, graduates will become Registered Technologists in Radiography.

Job market:

Radiographers continue to be in demand in Pinellas County. The job placement rates for program graduates has been 100 percent within three months of graduation since the program's inception in 1981.

Average local starting salary:

\$37,500 - \$40,000. Salaries vary with position, experience, hiring agency and geographic location.

Time for program completion:

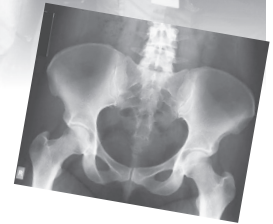
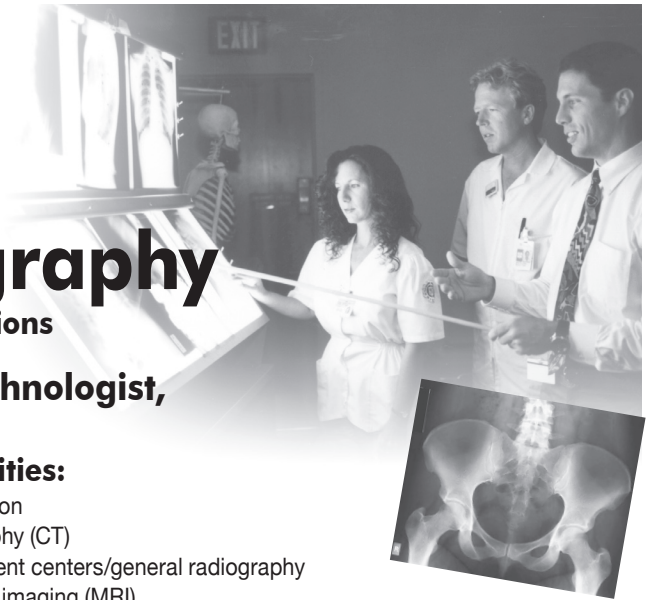
Two years (six terms)

Program accreditation:

The Radiography program is accredited by the Joint Review Committee on Education in Radiologic Technology, 20 N Wacker Drive, Suite 2850, Chicago, IL 60606, 312-704-5300.

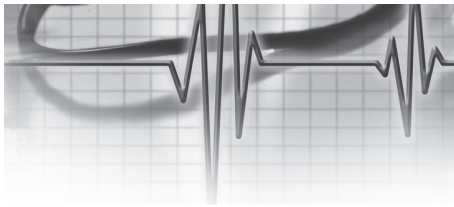
Progression:

All graduates are eligible to sit for the ARRT examination. Students earning an A.A. degree are eligible to transfer directly into the Bachelor of Science degree in Radiologic Sciences program offered at the University of Central Florida and other colleges and universities.



Online education:

General education and science-support courses are available online. Online professional courses are in development.



ASSOCIATE IN SCIENCE DEGREE

Radiography

(Fully transferable to a bachelor's degree at University of Central Florida)

Program begins in January.

Before entering the first term of the Radiography program courses, students are encouraged to begin general education courses and must complete the pre-entry requirements. General education and support courses do not have to be completed in the order listed. Candidates also will complete the Health Programs Application form. Please see a counselor or advisor.

Total credit hours: 77

- 28 general education/science support hours and
- 49 professional hours

Fully transferable to a bachelor's degree at the University of Central Florida



PRE-ENTRY REQUIREMENTS – Grade of C or higher required – (7 credits)

BSC 2085	Human Anatomy & Physiology I	3
BSC 2085L	Human Anatomy & Physiology Laboratory I	1
MAC 1105	College Algebra.....	3

****GENERAL EDUCATION COURSES _____ (18 credits)**

ENC 1101	Composition I or (Honors).....	3
SPC 1017	Introduction to Speech Communication OR (SPC 1017H, 1065, 1608 or 1608H)	3
	Humanities/Fine Arts Approved Course	3
	Social & Behavioral Sciences Approved Course	3
PHI 1600	Studies in Applied Ethics OR (PHI 1602H, 1631, 2635 or 2649).....	3
CGS 1100*	Microcomputer Applications	3

SUPPORT COURSES (4 credits)

BSC 2086	Human Anatomy & Physiology II	3
BSC 2086L	Human Anatomy & Physiology Laboratory II	1

PROGRAM COURSES (48 CREDITS)

1ST TERM IN PROGRAM (10 credits)

RTE 1000	Orientation to Radiography	3
RTE 1418	Principles of Imaging I.....	2
RTE 1418L	Principles of Imaging I Lab	1
RTE 1503C	Radiographic Procedures I.....	3
RTE 1503L	Radiographic Procedures I Lab.....	1

2ND TERM IN PROGRAM (6 credits)

RTE 1513C	Radiographic Procedures II.....	2
RTE 1513L	Radiographic Procedures II Lab	1
RTE 1804L	Radiographic Clinical Education I	3

3RD TERM IN PROGRAM (11 credits)

RTE 1458	Principles of Imaging II.....	3
RTE 1473L	Radiographic Quality Assurance Lab.....	1
RTE 1814L	Radiographic Clinical Education II	5
RTE 2385	Radiation Biology.....	2

4TH TERM IN PROGRAM (7 credits)

RTE 2613	Radiation Physics.....	2
RTE 2824L	Radiographic Clinical Education III	5

5th TERM IN PROGRAM (6 credits)

RTE 2782	Radiographic Pathology	2
RTE 2834L	Radiographic Clinical Education IV	4

6th TERM IN PROGRAM (8 credits)

RTE 2563	Advanced Medical Imaging	3
RTE 2844L	Radiographic Clinical Education V	5

TOTAL PROGRAM HOURS 77

For more information, contact:

727-341-3758

www.spcollege.edu/hec/radiography

**St Petersburg College
Radiography Program
Minimum Requirements Checklist
(Effective with the new selective admissions application)**

Curriculum

Please complete the following items as soon as possible and refer to the [Radiography](#) website for program information.

Program begins in January.

- Completion of [St. Petersburg College Admission Application](#) and the non-refundable fee.
- Submission of official, unopened (sealed) high school transcript(s) or GED transcript. Unofficial copies or official copies that have been opened are not acceptable. Applicants who have earned an Associate in Arts, Associate in Science, Baccalaureate, or higher degree from an accredited institution are waived from this requirement.
- Submission of all official, unopened (sealed) college transcripts from previously or currently enrolled colleges. Unofficial copies or official copies that have been opened are not acceptable.
- Completion of [placement testing](#) and all college preparatory work. Applicants who have credits earned in mathematics, composition, and/or reading may be waived from the placement test.
- If previously or currently enrolled at SPC, academically in good standing and have a cumulative 2.0 GPA.
- A minimum 2.75 GPA on a 4.00 scale in all courses completed that are included in the general education and support courses of the Radiography curriculum.
- Completion of BSC 2085 and BSC 2085L, Human Anatomy and Physiology I and Lab, and MAC 1105, College Algebra with grades of “C” or better.
- Completion of a minimum of eight hours of observation, volunteer service or work experience in a radiology department or imaging center verified by a radiologist or radiographer.
- At least 18 years of age.
- Submission of the [Selective Health Programs Application](#) with the completed [Health Program Experience / Observation Record](#) by the July 1st application deadline.

Within 90 days of the start of the first specialty course:

- Successful passing of a background check and drug screening.
- Completion of the Health Examination Form and any required immunizations.
- Completion of the [Student Services Orientation](#).

Important Information

Selective Admission Process

The Selective admissions process is designed to inform selected individuals sooner of their acceptance and to provide them with more time to make necessary preparations to be successful in their chosen academic program.

Please review the following important information and contact the Health Education Center with any questions you may have.

County Preference

Pinellas county residents will be given first priority for admission*. Should there be positions available after exhausting eligible Pinellas county resident applicants, the remaining applications will be considered based on the point system.

Deadlines for Health Application

There are TWO chances to be selected each semester. However there is only ONE application Deadline. Applications received after the deadline will be placed in the next semester's applicant pool.

July 1st for the spring session (Radiography)

Health Application Process

Important Information

- **All required documentation and the Health Programs selective admission application must be submitted by the student and received by the college prior to the appropriate deadline in order to ensure each student file is complete by the deadline date, otherwise the applicant will be considered ineligible.**
- **All health program applications must be submitted to the Health Education Center.**

For **Spring** admission, students whose applications are complete on July 1st will be considered for the first applicant pool. Seventy percent of the admissions will be selected from the first pool. An applicant whose file is incomplete on July 1st will be notified and will have until August 15th to complete their application to be considered for the second applicant pool.

Students who are eligible but not selected in the first pool will automatically be considered for the second applicant pool.

Point System

Students will be admitted into a selective admission program using a point system based on health program GPA, and general education/support course work completed, according to the following:

- Sixty percent **(60%)** of the points awarded will be based on the number of **health program general education and support coursework completed.**
- Forty percent **(40%)** of the points awarded will be based on the **health program GPA** (grades earned from general education and support courses applicable to the designated health program).

Applicants who are not eligible or not selected must re-apply for a future admission date.

****Preference may be given to Pinellas County residents for filling specialty courses. A resident must be a "resident for tuition purposes" as defined in Florida Statutes (hereinafter referred to as F.S.) 240.1201 and must have been a resident of Pinellas County for at least 12 months immediately prior to the student's application to the program. Slots may be available to non-residents; however, resident of the College's service area for each program may be given preference over non-residents for these slots.**

Please contact the Health Education Center (727)341-3687 for additional information.

The following is an estimate of program costs. The fees are subject to change.

Tuition:	
Florida Residents.....	\$4,177.25
Non-Florida Residents.....	\$15,566.32
Textbooks	500.00
Uniforms	200.00
Liability Insurance.....	46.00
Laboratory Fees.....	160.00
Graduation Fee.....	None
TOTAL ESTIMATED COST.....	\$5,083.25
(Florida Residents)	

Please contact the Health Education Center (727)341-3687 for additional information.

Important Information Links

SPC Homepage

www.spcollege.edu

Health Education Center Homepage

www.spcollege.edu/HEC

St. Petersburg College Admission Application

<http://www.spjc.edu/webcentral/forms/apply.htm>

Selective Admissions Application

<https://www1.spjc.edu/hec/application/login.php>

Radiography Curriculum

<http://www.spcollege.edu/program/RAD-AS>

Observation Form

<http://www.spcollege.edu/hec/appsforms/obs.pdf>

Financial Assistance Services

<http://www.spcollege.edu/central/SSFA/HomePage/index.htm>

Office of Services for Students with Disabilities

<http://www.spcollege.edu/webcentral/catalog/Current/ossd.htm>

New Initiative Program (NIP)

www.spcollege.edu/HEC/nip

Transcript Request Form

www.spcollege.edu/webcentral/forms/hs_trans.pdf

Essential Functions Checklist

<http://www.spcollege.edu/hec/Radiography/ess.funct.rad.pdf>

Drug and Background Screening Policy

<http://www.spcollege.edu/hec/StudentActivities/background.htm>